



**Shriji Sparekraft Impex Pvt. Ltd.**

(AN ISO 9001 : 2015 CERTIFIED COMPANY)

**NEW GENERATION TOP ROLLERS**

# Introduction

We strive to surpass customer's expectations by offering them a wide range of TOP ROLLERS for preparatory rollers as level as finishing rollers. It is a product delivered from the dedicated Engineers hands. The Company, has its own infrastructure such as Building, Machineries, Precise Measuring Instruments, Testing Equipments and etc., to manufacture High Quality High End Top Rollers under one Roof.

After Conducting continuous research and lab testings, It is designed to Match at par with OEM and to meet all quality standards. It is made out from test certified alloy steel and it is getting processed under High Tech Latest Machineries. It is processed in Aerospace Heat Treatment Shop. Each and every process is monitored by high precise instruments and passing over many Lab tests.



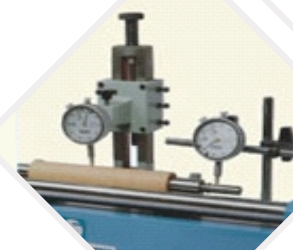
| Bought Out Items | Make & Model  |
|------------------|---|
| Bearings         | INA & IKO   |
| Grease           | ISOFLEX TOPAS NB 52/ ISOFLES LDS 18 For Preparatory and STABURAGS NBU 12 / 300KP For Finishing                        |
| Cots             | <b>Imported Cots:</b> Accotex or Daytex, Berkol and Yamuchi<br><b>Indegenous Cots:</b> Precitex, Inarco and Supertex. |
| Balls            | Imported from Europe Source with Specified metallurgy and HRC   |

## Technology

**SHRIJI** Top Rollers comes with Technology as OEM standard. And also new Innovative Multi Row Ball Bearing Technology.

### Advantages

- ✓ It is designed to withstand for appropriate specified load.
- ✓ Wear & Tear Will be Minimum in shells and End Bushes.
- ✓ End Bushes with Self locking design.
- ✓ Provision to avoid Fluff accumulation in End Bushes.
- ✓ More Durability as well so constant U%



## Products Range

### Preparatory Level

- ✓ Draw Frame
- ✓ Comber Detaching
- ✓ Comber Draw Box
- ✓ Lap Former
- ✓ Speed Frame Arbors

### Finishing Level

- ✓ Ring Spinning Arbors
- ✓ Sussen Compact Rollers
- ✓ OE Take up Rollers

## Cots Mounting & Grinding

Mounting of R/F & S/F cots

### Do

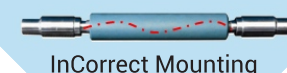
- Use 'Vertical Mounting Machine'. For faster mounting pneumatic mounting machine is recommended, otherwise hand mounting (manual) machine is sufficient.
- Align Base Plate & Mounting Ram before mounting.
- Mount Plain Cots within 20-30 minutes of adhesive application & buff only after 24 hours of drying.
- Use MEK or acetone to remove excess adhesive, which comes out during mounting.
- Use "centering pin" for Stress Free Plus(SF+) & Alufitt cots

### Don't

- Don't mount Alufitt / SF cots with jerky movements.
- Don't use an adhesive for Alufitt / SF cots.
- Don't use 'taper cone' with base dia. 19mm.



Correct Mounting



InCorrect Mounting

## Cots Maintenance Tips

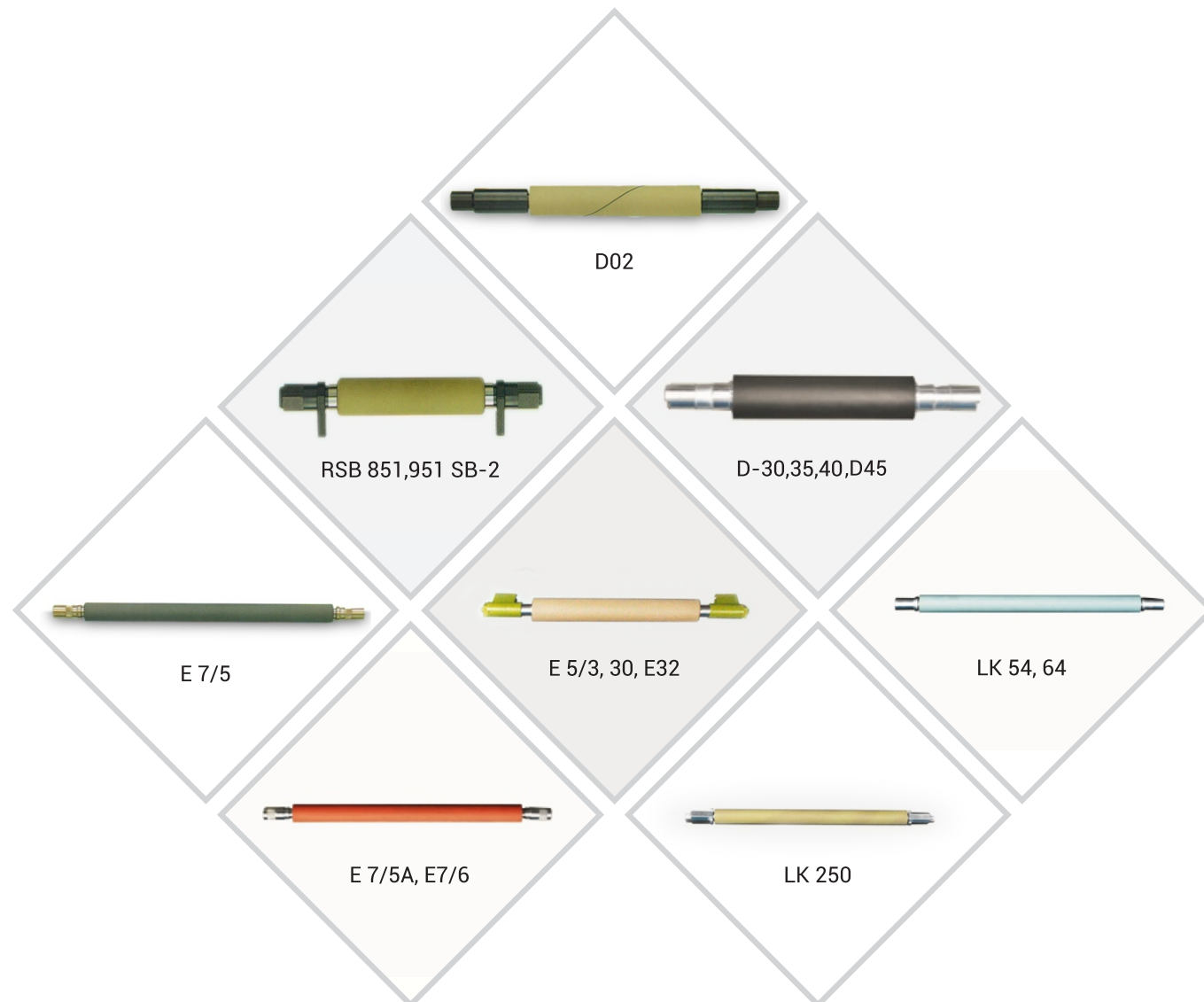
- ◆ Buff / grind the cots as per recommended schedule
- ◆ If required surface treatment should be done on the cots after buffing
- ◆ Do not use sharp blade / knife to remove lapping
- ◆ Use round edge/ bevelled edge cots
- ◆ Use size as per recommendation of OEM
- ◆ In normal spinning/roving traverse mechanism should be checked periodically
- ◆ Optimum top arm pressure should be maintained depending upon cot dimension / type of drafting / application



# Top Rollers - Preparatory

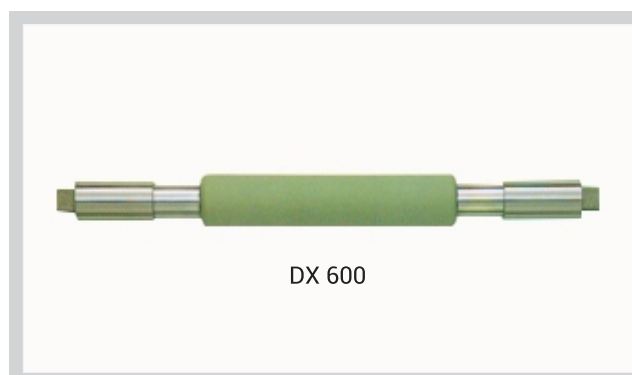
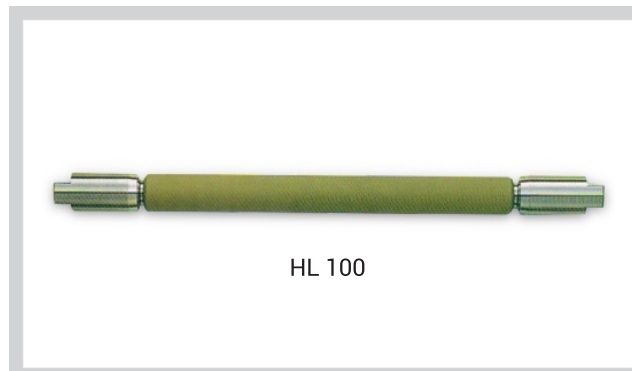
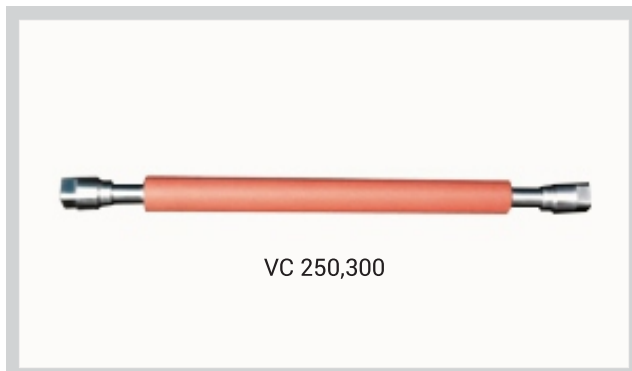
## Rieter / Lakshmi

| Draw Frame   | Comber Detaching Rollers  | Comber Draw Box Rollers         | Lap Formers  |
|--|---|---------------------------------|--|
| RSB-1,2,51, 52,851,951<br>SB-2,10,20,51,52                   | E7/2, E7/4 ,E7/5<br>TYPE-1 & TYPE-2                             | E7/2, E7/4 E7/5                 | E2/4 / LAKSHMI –<br>E2/4A SLIVER LAP –<br>TYPE -1 (TL=470) |
| D-10,D20,D30,D35,<br>D40,D40C,D41,D45,<br>D221, SB D 10, D20 | E7/5A, E7/6 ,E60, E 62,<br>E60H, E 65, E 66, E70,<br>E 72, E 75 | E65, E62, E66, E70,<br>E72, E75 | E4/1, LAKSHMI-E4/<br>1A RIBBON LAP                         |
| Do5, Do6/<br>LAKSHMI – Do6 D1/1 ,<br>D1/2A                   | LK 250, LK 64   | LK 250, LK 54,LK64Z             | E5/3, E30, E32, E35<br>OMEGA , LH10 , LH-15                |



## Toyoda / Cherry Harra

| Draw Frame              | Comber Detaching Rollers                         | Comber Draw Box Rollers | Lap Formers            |
|-------------------------|--|-------------------------|------------------------|
| DX 400, DX-500, DYH-500 | VC-250 , VC 300, CM100, CM110A , VC5 /ZINSER-830 | VC 250 / VC 300         | SL-100 / TOYODA TS-100 |

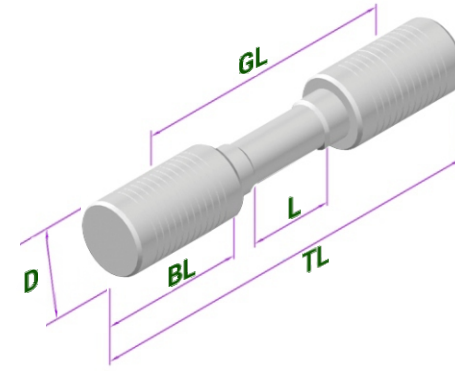


### Also Available For

- ◆ Trutzschler
- ◆ Vouk
- ◆ Zinser
- ◆ Padmatex
- ◆ Howa

| Description   | Cot Size                                | Glue on Cot |                        |                        | Alu.Core Cot            |   |                         |                                      |
|---|---|-------------|------------------------|------------------------|-------------------------|---|-------------------------|--------------------------------------|
|   |   | Teika       | Precitex               | Inarco                 | Daytex                  | Armstrong                               | Precitex                | Inarco                               |
| <b>DRAW FRAME</b>   |   |             |                        |                        |                         |   |                         |                                      |
| RSB 851, RSB 951,<br>RSB 1, RSB 2, SB 2,<br>SB 51 & SB 52 | D26 x D38 x 150                         |             |                        |                        | Grey - 83<br>Black - 72 | Black - 70<br>Green - 80<br>Grey - 83   | Black - 78<br>Pink - 83 | Blue - 85<br>Black - 78<br>Grey - 83 |
| Vouk SH 802 - Dia.30<br>Vouk SH 802 - Dia.23.1            | D30 x D45 x 175<br>D23.1 x D34/38 x 175 |             | Grey - 83<br>Grey - 83 |                        | Grey - 83<br>Grey - 83  | Grey - 83<br>Grey - 83                  | Grey - 83<br>Grey - 83  | Grey - 83<br>Grey - 83               |
| Vouk VS - 4A - Dia.30<br>Vouk VS - 4A - Dia.23.1          | D30 x D45 x 210<br>D23.1 x D38 x 220    |             |                        |                        |                         | Grey - 83<br>Grey - 83                  | Grey - 83<br>Grey - 83  | Grey - 83                            |
| Cherry / Toyoda-USC 600                                   | D23 x D34 x 180                         | Grey - 80   |                        |                        | Grey - 83               | Black - 70<br>Grey - 83                 | Grey - 83               | Grey - 83                            |
| Cherry Hara DX 500  | D22 x D34 x 180                         | Grey - 80   |                        |                        | Grey - 83               | Grey - 83                               |                         | Grey - 83                            |
| RSB - D 30  | D26 x D38 x 160                         |             |                        |                        | Grey - 83<br>Black - 72 | Black - 70<br>Green - 80<br>Grey - 83   | Grey - 83<br>Black - 78 | Grey - 83<br>Black - 78<br>Blue - 85 |
| Texmaco Howa DFK-2CD                                      | D24 x D34 x 180                         | Grey - 80   |                        | Grey - 83              | Grey - 83               | D.Brown - 70<br>Green - 80<br>Grey - 83 | Grey - 83               |                                      |
| LR DO/2S or TD 302  | D20.3 x D40 x 210                       |             | Grey - 83              | Blue - 85              |                         | Grey - 83                               | L- Pink - 83            |                                      |
| LR DO/6   | D25.3 x D39 x 186                       |             | Grey - 83              | Grey - 83              |                         | Grey - 83                               |                         |                                      |
| Padmatex 720 (4 over 3)                                   | D23 x D34 x 160                         |             | Grey - 83              | Grey - 83<br>Blue - 85 |                         | Grey - 83                               |                         |                                      |
| <b>COMBER DETACHING ROLLER</b>                            |   |             |                        |                        |                         |   |                         |                                      |
| LR E7/4   | D18 x D24 x 324                         | Yellow - 65 | D-Green - 65           | Violet - 68            | Blue - 65               | Green - 70                              |                         |                                      |
| LK - 250  | D18 x D24 x 326                         | Yellow - 65 | D-Green - 65           | Violet - 68            | Blue - 65               | Green - 70                              |                         |                                      |
| E7/5A,E7/6,E60H&E70R                                      | D16 x D24.5 x 348                       | Yellow - 65 |                        |                        | Blue - 65               |   | Pink - 65               | Violet - 68                          |
| Toyoda CM8 / Cm10   | D16 x D24 x 339                         | Yellow - 65 |                        | Blue - 65              |                         |   | Pink - 65               |                                      |
| E7/5  | D16 x D24.5 x 338                       | Yellow - 65 |                        | Blue - 65              | Blue - 65               |   | Pink - 65               | Violet - 68                          |
| Cherry Hara/Toyoda VC 250                                 | D16 x D23 x 340                         | Yellow - 65 |                        | Violet - 68            |                         | Lavender - 63                           | Pink - 65               |                                      |
| <b>COMBER DRAW BOX ROLLER</b>                             |   |             |                        |                        |                         |   |                         |                                      |
| LR E7/4   | 28.3 x D37 x 223                        |             | Grey - 83              | Grey - 83              |                         | Grey - 83                               |                         |                                      |
|   | D32.3 x D44 x 223                       |             | Grey - 83              | Grey - 83              |                         | Grey - 83                               |                         |                                      |
| E7/5,E7/5A,E7/6 & E60H                                    | D30 x D45 x 200.5                       |             |                        |                        |                         | Grey - 83<br>Green - 70                 | Grey - 83               | Grey - 83                            |
| Cherry Hara/Toyoda VC 250                                 | D22 x D31 x 210                         | Grey - 80   |                        |                        |                         |   | Grey - 83               | Grey - 83                            |
| <b>LAP FORMER ROLLER</b>                                  |   |             |                        |                        |                         |   |                         |                                      |
| E2/4A Sliver Lap  | D32.3 x D44 x 306                       |             | Grey - 83              | Grey - 83              |                         | Grey - 83                               |                         |                                      |
|   | D28.3 x D37 x 306                       |             | Grey - 83              | Grey - 83              |                         | Grey - 83                               |                         |                                      |
| E4/1A Ribbon Lap  | D32.3 x D41 x 306                       |             | Grey - 83              | Grey - 83              |                         | Grey - 83                               |                         |                                      |
| E5/3 & E30 Unilap   | D26xD40x300                             |             |                        | Grey - 83              |                         | Grey - 83                               | Grey - 83               |                                      |

# Ring Frame and Speed Frame Arbors



| Shriji Product No | Ring Frame Machine & Model | Equivalent To        | D  | GL   | TL    | BL | D   | L      |
|-------------------|----------------------------|----------------------|----|------|-------|----|-----|--------|
| STP 2065          | DJ 50 & KTTM FRONT & BACK  | SKF PK 225 LP-302-68 | 19 | 65   | 95    | 30 | 9.5 | 16.2   |
| STP 2268          | DJ 50 & KTTM MIDDLE        | SKF PK225 LP-303-68  | 25 | 68.4 | 100.4 | 32 | 9.5 | 16.2   |
| STP 2471          | Lr6 & LR G5/1              | DSN-7019 KRW         | 19 | 70.8 | 100.8 | 30 | 10  | 20     |
| STP 2475 M1       | RIETER FRONT & BACK        | DSN-7019 LRW-M1      | 19 | 75   | 105   | 30 | 10  | 20/28  |
| STP 2475          | RIETER G5/1 FRONT & BACK   | DSN-7519 LRW         | 19 | 75   | 109   | 34 | 10  | 20     |
| STP 2475 M        | RIETER G5/1 FRONT & BACK   | DSN-7519 LRW-M       | 19 | 75   | 105   | 30 | 10  | 20     |
| STP 2671          | Dj5 & GO2 FRONT & BACK     | DSN-7019 RW          | 19 | 70.8 | 104.8 | 34 | 8.9 | 5(REF) |
| STP 2675          | Dj5 & GO2 FRONT & BACK     | DSN-7519 RW          | 19 | 75   | 109   | 34 | 8.9 | 5(REF) |

| Shriji Product No | Speed Frame Machine & Model         | Equivalent To                  | D  | GL  | TL  | BL | D  | L         |
|-------------------|-------------------------------------|--------------------------------|----|-----|-----|----|----|-----------|
| STP 52110         | LF 1400 -4 RLR DRAFT- 1,3 & 4TH ROW | DSN-11056 19KRW                | 19 | 110 | 166 | 56 | 12 | 29        |
| STP 53110         | GS MODEL FRONT & BACK               | DSN-11056 19RW                 | 19 | 110 | 166 | 56 | 12 | 31        |
| STP 54110         | Lf1400 -3RLR DRAFT 1&3              | DSN-11056 19RWS                | 19 | 110 | 166 | 56 | 16 | 14.4/33   |
| STP 60110         | LF 1400A 3 RLR DRAFTING             | LMW- 3RLR DRAFTING             | 19 | 110 | 150 | 40 | 16 | 14.4/33.2 |
| STP 50110         | SKF DRAFTING FRONT & BACK           | SKF- LP 315 110                | 19 | 110 | 150 | 40 | 11 | 22.5      |
| STP 51110         | SKF DRAFTING MIDDLE                 | SKF – PK1500/PK 1600           | 19 | 110 | 150 | 40 | 11 | 28.2      |
| STP 51110 M       | SKF DRAFTING MIDDLE                 | SKF – Pk1500/ PK 1600 MODIFIED | 19 | 110 | 150 | 40 | 12 | 28.2      |
| STP 52110 M       | LF 1400 -4 RLR DRAFT- 1,3 & 4TH ROW | DSN-11056 19KRW MODIFIED       | 19 | 110 | 150 | 40 | 12 | 29        |
| STP 53110 M       | GS MODEL FRONT & BACK               | DSN-11056 19RW MODIFIED        | 19 | 110 | 150 | 40 | 12 | 31        |
| STP 54110 M       | Lf1400 -3RLR DRAFT 1&3              | DSN-11056 19RWS MODIFIED       | 19 | 110 | 150 | 40 | 16 | 14.4/33   |
| STP 56110         | LF 1400-4 RLR DRAFT-2nd Row         | DSN-11070-19RRW                | 19 | 114 | 184 | 70 | 12 | 33.2      |
| STP 58110         | Lf 1400-3RLR DRAFT-2nd ROW          | DSN-11070-19RRWS               | 19 | 114 | 184 | 70 | 16 | 14.4/33.2 |

# Multi Row Ball Bearing Top Rollers

All Kind Of Preparatory  
Top Rollers

Elite, Suessen  
Compact Spinning &  
OE Take-up Arbors

Ring Frame Arbors  
and  
Speed Frame Arbors

COMPLETE RANGE OF  
TOP ROLLERS



**Shriji Sparekraft Impex Pvt. Ltd.**

(AN ISO 9001 : 2015 CERTIFIED COMPANY)

**SALES PARTNER**

**CORRESPONDENCE ADDRESS :**

3, GROUND FLOOR, DUN SHOPPING CENTRE,  
OPP. GAMADIA COLONY,  
225-227, J. D. ROAD,  
TARDEO, MUMBAI - 400 007, INDIA.

☎ (+91 22) 23824034

☎ (+91 22) 23814034

✉ SPARES@SHRIJISPAREKRAFT.COM

🌐 WWW.SHRIJISPAREKRAFT.COM