

# Shriji Sparekraft Impex Pvt. Ltd.

(AN ISO 9001 : 2015 CERTIFIED COMPANY)



**COMPLETE RANGE OF GENUINE QUALITY  
REPLACEMENT SPARE-PARTS, SUITABLE FOR:**

**AUTOCONER (MODEL 138 / 238 / 338 / AC-5 / X-5 / AC-6) &  
MACH CONER (MODEL 7-II / 7-V / 21-C / QPRO PROCESS CONER)  
WINDING MACHINES.**



☑ **TECHNOLOGY** ☑ **QUALITY** ☑ **SATISFACTION** ☑ **RELATIONSHIP**

# Thinking of Autoconer's Spare-Parts or Servicing ?? Look no further.....

**SHRIJI SPAREKRAFT IMPEX PVT. LTD.** is one of the leading Manufacturer & exporter for complete range of Genuine Quality Replacement Spare-Parts, suitable for **Autoconer** (Model 138 / 238 / 338 / AC-5 / X-5 / AC-6) & **Mach Coner** (Model 7-II / 7-V / 21-C / QPRO Process Coner) winding machines in India. We are the first and only Company in winding machinery Spare-Parts business field, who has been accreditation with latest & prestigious **"ISO 9001 : 2015"** Certification. Our constant commitment to improvement of quality, development and our high standards in services, differentiate us from our competitors. Our long lasting and highly involved relationship with our customers, reflect their faith in our products and services. We strive to set very high industry standards in quality, product development and services. For more details about us, we request you to please visit our **Website : [WWW.SHRIJISPAREKRAFT.COM](http://WWW.SHRIJISPAREKRAFT.COM)**

We supply to most of all the reputed Ring Spinning Textile Mills in India. Our products are regularly exporting to more than 24 countries, mainly to Europe, Far East and Asian Countries.

## Products

Efficient design, precision manufacturing, quality tested and competitively priced products, include complete range of spare-parts, with **AT PAR QUALITY** suitable for :

**Autoconer Model - 138**  
**Autoconer Model - 238**  
**Autoconer Model - 338**  
**Autoconer Model - AC-5 / X-5**  
**Autoconer Model - AC-6**  
**Mach Coner Model 7-II**  
**Mach Coner Model 7-V**  
**Mach Coner Model 21-C**  
**Mach Coner Model QPRO**

## Central Print Station

MIS Printers housed on each Autoconer Model 238 (146-147) & AUTOCORO (O.E.) are highly vulnerable to the environment. Dust is the biggest enemy of these printers causing high maintenance for the printer head and very expensive metallic paper cost.

We have developed a system for replacing these printers by one centralized plain paper printer located away from the machine in a dust free room. This printer can be attached to maximum 8 such winding machine and can print reports from all these 8 machines. All you require is a cable connected to all these 8 machines, with central print station system and the central printer.

Please contact us for more details.

## Services

### ● Repairing

PCB Repairing: All types of PCB's of Autoconer & Machconer Winding Machines (All Models), Uster, Loepfe EYC Sensing head, Splicer Valve-3/2", Solenoid Valve, all types of Sensors and other Electronic spares, from Ex-O.E.M. trained engineers.

Scissors Blade Sharpening: All type of H.S.S., Carbide tips and Ceramic Cutters of Autoconer and Mach Coner Machines for all Models.

### ● Servicing & Overhauling

Shifting, Erection, Installation, Overhauling & Servicing of Autoconer, Mach Coner and Process Coner Winding Machines, from Ex-O.E.M. trained engineer.

### ● Customised Product development

We can design, develop and manufacture customized spares as per customer requirements for bulk quantity.

### ● Other Services

We undertake buying and selling of old / used Winding machines.

# Autoconer Model - 238



20203 - 45  
WASHER



20235 - 44  
FILTER SCREEN



20235 - 145  
THROTTLE FLAP



27050 - 04  
MAGAZINE CARRIER



27050 - 09  
MAGAZINE HALF



27050 - 13  
MAGAZINE HALF



30107 - 02  
CPL. SWITCH HOUSING



30107 - 03  
SWIVELLING HOOD



30107 - 12  
COVER



30120 - 12  
PISTON



30120 - 901  
CRADLE SHOCK ABSORBER



30380 - 15  
DEFLECTION PLATE



30380 - 17  
DEFLECTION PLATE



31601 - 03  
GUIDE BAR (UPPER)



31601 - 04  
GUIDE BAR (LOWER)



32501 - 31  
SWIVEL BOLT



32501 - 33  
PIVOTING SLEEVE



32501 - 42  
CAM PIECE (MODIFY)



32510 - 34  
OPENER ARM



33001 - 14  
PILOT MOTOR GEAR



33001 - 14  
PILOT MOTOR SHAFT



33001 - 14  
PILOT MOTOR WORM



33005 - 34  
TOOTHED SEGMENT



33010 - 13  
CAM DISK  
(FU 2.1)



33010 - 66  
CAM FOLLOWER  
(FU2)



33015 - 13  
SUCTION TUBE  
(UN-BREAKABLE)



33020 - 09  
COMB STRIP (0.3 & 0.5)



33045 - 09  
SCISSORS HOUSING



33045 - 14  
SCISSORS SHAFT



33045 - 16  
COVER

# Autoconer Model - 238



33045 - 19  
SCISSORS BLADE  
(CARBIDE TIPS & HSS)



33045 - 20  
SCISSORS BLADE  
(CARBIDE TIPS & HSS)



34101 - 03  
CYLINDER



34101 - 07  
FASTENING PIECE



34101 - 08  
GUIDE BUSH



34101 - 14  
BEARING SHAFT



34101 - 17  
BRAKE BUSH



34101 - 37  
CPL. BRAKE RING



34101 - 37  
PILE WHEEL  
FOR BRAKE RING



34101 - 68  
HOLDING RING (STEEL)  
(ALL SIZES)



34101 - 77  
HOLDING RING (PU)  
(ALL SIZES)



34201 - 10  
BEARING (51107X)



34201 - 17  
CPL. ADOPTER (LH)



35101 - 21  
LATCH



35101 - 81  
STATIONARY SHEAR BLADE  
(CARBIDE TIPS & HSS)



35101 - 84  
PIVOTING SHEAR BLADE  
(CARBIDE TIPS & HSS)



35101 - 96  
TOOTHED SEGMENT



35101 - 113  
TOOTHED SEGMENT



35101 - 208  
LEVER



35101 - 211  
CONTROL BOLT



35201 - 40  
BOBBIN PEG



35301 - 12  
IC MODULE (DRIVE)



35301 - 104  
TRANSFER ROD



35301 - 133  
GUIDE WIRE



37201 - 10  
CONTROL LEVER



37701 - 20  
LID BEARING



37701 - 20  
SPACER RING



37701 - 67  
SWIVEL LID (REGULAR)



37701 - 67  
SWIVEL LID (UN BREAKABLE)



37701 - 75  
CONTROL LEVER

# Autoconer Model - 238



40101 - 33  
TENSION DISC



40101 - 55  
TOOTHED WHEEL



40105 - 10  
HOLLOW SHAFT



40105 - 19  
TENSION DISC



40105 - 66  
GUIDE PLATE



40160 - 05  
ACTUATING LEVER



40160 - 44  
STATIONARY SHEAR BLADE  
(CARBIDE TIPS & HSS)



40160 - 50  
PIVOTING SHEAR BLADE  
(CARBIDE TIPS & HSS)



41001 - 03  
SUPPORT ANGLE



41001 - 34  
ACTUATING FORK



41001 - 41  
DOUBLE LEVER



41501 - 92  
MAGNET



41501 - 102  
CUTTING KNIFE



42001 - 15  
DRIVE SHAFT



42001 - 19  
COUPLING GEAR



42001 - 47  
GUIDE PLATE



42001 - 97  
WAX SHAFT



42001 - 104  
WAX CARRIER



42001 - 107  
YARN TRAP



42001 - 902  
CPL. WAXER SOCKET



42001 - 903  
CPL. LIFTING PLUNGER



42030 - 09  
TOOTHED WHEEL



42030 - 14  
BEARING SHAFT



42035 - 08  
TOOTHED SEGMENT



42501 - 37  
NOZZLE (SMALL)



42501 - 46  
NOZZLE (BIG)



56801 - 70  
TOOTHED SEGMENT



56801 - 98  
PINION



56801 - 202  
AIR DUCT



56801 - 210  
CPL. SCISSORS PLATE

# Autoconer Model - 238



56801 - 225  
SCISSORS BLADE  
(CARBIDE TIPS & HSS)



56801 - 230  
SCISSORS BLADE  
(CARBIDE TIPS & HSS)



56801 - 310  
COVER (13 & 16 MM)



56801 - 357  
DISTRIBUTOR



56801 - 433  
COUPLING HALF



61001 - 09  
NYLON GEAR 19T



61001 - 17  
BEARING CAP



61001 - 26  
SHAFT



61001 - 31  
CPL.ROLLER



63020 - 03  
LEVER WITH MAGNET



65101 - 04  
SHAFT



65101 - 35  
COVER



75203 - 04  
BELT SHIFTER(BRACKET)



80590 - 17  
BOBBIN (FOOT)  
(CADDY BASE)



80590 - 30  
BOBBIN CARRIER  
(18-21 & 20-23)



80590 - 30  
BOBBIN CARRIER  
(22-25 & 24-28)



81250 - 145  
SUPPORTING DISC



81250 - 146  
DRIVE BUSH



81250 - 451  
SUPPORTING RING



81560 - 20  
CENTERING



85035 - 44  
SCISSORS BLADE  
(CARBIDE TIPS & HSS)



85050 - 116  
TOOTHED LOCK WASHER



85050 - 117  
TOOTHED LOCK WASHER



85050 - 125  
TOOTHED LOCK WASHER



85530 - 18  
PINION SHAFT



85530 - 140  
CAM



85530 - 152  
CAM



99910 - 46  
PULLER DEVICE



99910 - 65  
STRIPPING POT



F 208897  
CAM ROLLER BEARING

# Autoconer Model - 338



20230 - 77  
CPL. CYLINDER



20230 - 105  
FILTER SCREEN



20230 - 113  
COVER



20230 - 120  
WINDOW



22010 - 32  
SLEEVE



22010 - 38  
LOCKING



22010 - 40  
TUBULAR LOCK



22010 - 42  
SOCKET



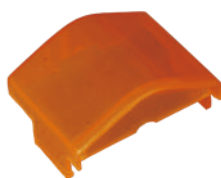
27070 - 07  
PLATE



27251 - 07  
MOUNTING  
WHEEL



27251 - 60  
REVERSING DEVICE



30105 - 06  
COVER



30107 - 04  
SLIDER (NEW COLOUR)



30107 - 04  
SLIDER (OLD COLOUR)



30110 - 06  
COVER



30115 - 11  
TOOTHED SEGMENT  
(NEW DESIGN)



30115 - 11  
TOOTHED SEGMENT  
(OLD DESIGN)



30120 - 06  
MAGNETIC COIL



30120 - 11  
COVER



30120 - 14  
UNIVERSAL JOINT



30120 - 22  
SEAL RING



30120 - 23  
PISTON



30125 - 05  
CLAMPING LEVER



30125 - 31  
CLAMPING LEVER



30125 - 35  
STOP LEVER



30130 - 06  
COMPENSATING LEVER



30301 - 04  
MOTOR HOUSING



30301 - 04  
MOTOR HOUSING PCB  
WITH SIDE COVERS



30301 - 18  
LOCKING LID



31320 - 09  
LEVER

# Autoconer Model - 338



32510 - 22  
LEVER



32510 - 45  
CRADLE ARM BUSH (MODIFY)



32530 - 01  
CPL.ADOPTER (RH)



32530 - 08  
GUIDE BUSH



32530 - 14  
BEARING SHAFT



32530 - 17  
BRAKE BUSH



32530 - 18  
FASTENING PIECE(MODIFY)



32530 - 20  
BRAKE LINING



32530 - 30  
PILE WHEEL



32530 - 36  
BRAKE RING



32530 - 70  
HOLDING RING (STEEL)  
(ALL SIZES)



32530 - 70  
HOLDING RING (PU)  
(ALL SIZES)



32535 - 10  
CAP



32535 - 18  
BEARING (51107X)



33001 - 14  
COVER FOR VALVE



33001 - 60  
CPL.GEAR BOX ASSLY.  
(MODIFY DESIGN)



33001 - 60  
GEAR BOX COVER  
(MODIFY DESIGN)



33001 - 61  
GEAR BOX COVER  
(OLD DESIGN)



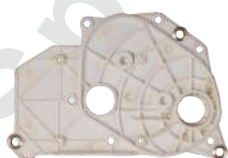
33001 - 62  
TOOTHED WHEEL  
(Z 80 X 12)



33001 - 64  
TOOTHED WHEEL  
(Z 86 X 12)



33001 - 64  
TOOTHED WHEEL (STEEL)  
(Z 86 X 12)



33001 - 65  
GEAR HOUSING



33001 - 68  
SHAFT



33001 - 69  
TOOTHED WHEEL (Z-22)



33001 - 88  
VALVE



33010 - 06  
CAM SHAFT



33010 - 08 & 11  
CPL. CAM WITH  
TOOTHED WHEEL



33010 - 09  
MAGNET HOLDER



33010 - 12  
CAM



33010 - 13  
SWITCH CAM



# Autoconer Model - 338



33010 - 15  
SPACER WASHER



33010 - 18  
CAM FOLLOWER



33010 - 35  
TOOTHED SEGMENT



33010 - 43  
TOOTHED SEGMENT



33020 - 04  
SUCTION TUBE



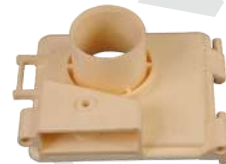
33020 - 06  
CLIP



33020 - 07  
CLAMPING PIECE



33020 - 09  
SUCTION NOZZLE



33045 - 05  
SHUTTER HOUSING



33045 - 08  
BOLT



33045 - 10  
LEVER



33045 - 15  
SUCTION CONNECTION



33045 - 16  
SNAP LOCK



33045 - 36  
PULL ROD



33045 - 38  
SENSOR BRACKET



33050 - 11  
SUCTION PIPE SHUTTER



33050 - 22  
PINION



33050 - 35  
SUCTION DUCT



36001 - 62  
TOOTHED WHEEL  
(NEW DESIGN)



36001 - 62  
TOOTHED WHEEL  
FOR STEP MOTOR



36001 - 74  
TENSION DISC  
(NEW DESIGN)



36001 - 74  
TENSION DISC  
(OLD DESIGN)



36001 - 74  
WORM FOR  
TENSION DISC



36001 - 81  
TOOTHED WHEEL  
(NEW DESIGN)



36001 - 81  
TOOTHED WHEEL (Z-31)  
(OLD DESIGN)



36001 - 105  
ACTUATING LEVER



36001 - 165  
RUBBER SLEEVE



36010 - 11  
CARRIER  
WITH MAGNET



36010 - 122  
INTERMEDIATE PIECE



36010 - 141  
TENSION DISC  
(NEW DESIGN)

# Autoconer Model - 338



36010 - 141  
TENSION DISC  
(OLD DESIGN)



36010 - 162  
BLOWER NOZZLE



36060 - 32  
SWIVEL LEVER



36060 - 78  
ACTUATING CAM



36301 - 09  
GUIDE PLATE



36301 - 18  
YARN TRAP



36301 - 31  
BLOWER NOZZLE



36301 - 52  
LEVER



36301 - 64  
DRIVE SHAFT



36301 - 66  
NOTCHED DISK



36301 - 68  
LIFTER ARM



36301 - 70  
LIFTING PLUNGER



36301 - 144  
WAX SHAFT



36401 - 05  
BRACKET



36401 - 22  
INTERMEDIATE PIECE



36401 - 65  
YARN LOCK



36405 - 05  
SLUB CATCHER HOLDER  
(USTER)



36405 - 55  
SLUB CATCHER HOLDER  
(LOEPFE)



36801 - 57  
CAM FOLLOWER



36801 - 92  
EXHAUST CHANNEL



36801 - 97  
PULL ROD



36801 - 109  
PULL ROD



36801 - 116  
LEVER



36801 - 125  
LEAF SPRING



36801 - 155  
WORM WHEEL



36801 - 203  
SLEEVE



36801 - 277  
ADAPTER PLATE



36801 - 460  
PRISM (ALL SIZE)



37701 - 38  
BEVEL GEAR



37701 - 43  
DRIVE LEVER

# Autoconer Model - 338



37701 - 69  
MALTESE CROSS



37701 - 92  
LID BEARING



37701 - 104  
SWIVEL LID



37710 - 33  
TOOTHED WHEEL  
(Z=14/Z=56)



37710 - 131  
SENSOR BRACKET



37730 - 02  
TOOTHED WHEEL  
(Z=72)



37740 - 11  
DOUBLE LEVER



37740 - 23  
TRANSFER ROD



37760 - 04  
HOUSING COMPLETE



37760 - 08  
CONTROL LEVER



37760 - 11  
ELECTROMAGNET



50190 - 09  
CHAIN LINK



52020 - 07  
CAM SHAFT WITH KEY



52020 - 20  
CAM



52020 - 25  
CAM



52030 - 01  
CAM FOLLOWER



52030 - 31  
CAM FOLLOWER



52030 - 35  
UNIVERSAL JOINT



52030 - 57  
TOOTHED SEGMENT



52030 - 61  
DRAW SPRING



52030 - 134  
CYLINDER



52030 - 140  
LEAF SPRING



52030 - 15  
SCISSORS  
SUPPORT



52120 - 01  
CAM FOLLOWER



52140-06  
DRIVE WHEEL



52140 - 18  
DRIVE ARM



52150 - 51  
LEVER



52150 - 62  
FINGER



52150 - 82  
SUPPORTING PLATE



78010 - 49  
FOOT (CADDY BASE)

# Autoconer Model - AC-5 / X-5



22015 - 32  
SLEEVE



22015 - 36  
LOCKING



22015 - 40  
ANGULAR  
CONNECTING



22015 - 42  
GROMMET



27251 - 07  
MOUNTING WHEEL



27251 - 97  
FILTER SCREEN



30105 - 01  
HOUSING



30105 - 10  
COVER



30107 - 01  
LAMP CAP



30107 - 05  
CAP



30110 - 05  
DISPLACEMENT  
COVER (MODIFY)



30115 - 15  
TOOTHED SEGMENT



30120 - 11  
COVER



30120 - 12  
CYLINDER



30120 - 30  
PISTON WITH BUSH



30132 - 38  
TOOTHED WHEEL



30140 - 02  
TOOTHED WHEEL  
FOR SUCTION  
ARM DRIVE



30301 - 03  
MOTOR  
HOUSING



30301 - 03  
MOTOR HOUSING PCB  
WITH CABLE AND  
CONNECTOR



30301 - 10  
DOWEL



30301-16  
DRUM SHAFT



30380 - 15  
DEFLECTION PLATE



30380 - 17  
DEFLECTION PLATE



32511 - 18  
CYLINDER



32511 - 25  
GUIDE BUSH



32511 - 29  
BEARING SHAFT



32511 - 31  
SCREW BOLT



32511 - 37  
BRAKE BUSH



32511 - 38  
BRAKE LINING



32511 - 39  
MAGNET WHEEL

# Autoconer Model - AC-5 / X-5



32511 - 40  
BRAKE RING



32530 - 91  
HOLDING RING  
(ALL SIZE)



32530 - 92  
CLUTCH RING



32535 - 86  
COMPLETE ADAPTER  
(L. H.)



33001 - 21  
VALVE  
(BLACK)



33020 - 04  
SUCTION TUBE



33045 - 08  
BOLT



33045 - 34  
GASKET



33045 - 39  
SEAL



33055 - 01  
LEVER FOR SUCTION  
ARM SHUTTER



36010 - 04  
TENSIONING  
SECTION CPL.



36010 - 182  
BLOWER NOZZLE



36020 - 23  
BLOWER NOZZLE



36020 - 64  
TOOTHED WHEEL  
(NEW DESIGN)



36110 - 01  
SUPPORTING  
ARM



36110 - 06  
CYLINDER



36110 - 08  
BUTTERFLY LEVER



36110 - 11  
ACTUATING CAM



36110 - 12  
OPERATING  
LEVER



36111 - 09  
LEVER



36111 - 25  
SCISSORS  
ACTUATING LEVER



36301 - 01  
COMPONENT  
CARRIER



36301 - 21  
COVER



36301 - 142  
BRACKET



36301 - 600  
NOZZLE



36320 - 14  
LIMIT STOP



36320 - 20  
WAX SHAFT  
COMPLETE



36320 - 24  
THRUST WASHER



36401 - 35  
INTERMEDIATE  
PIECE



36802 - 70  
ADAPTER SLEEVE

# Autoconer Model - AC-5 / X-5



36802 - 76  
BRACKET



36802 - 82  
COVER



36803 - 28  
FEEDER LEVER  
MAGNET



36803 - 36  
CPL. LID  
LEVER



36803 - 36  
LID LEVER  
ONLY



36803 - 38  
STRAP



37720 - 16  
DRIVE SHAFT



37720 - 16  
DRIVE SHAFT-  
BOTTOM - 12 T



37720 - 20  
CAM FOLLOWER



37720 - 28  
CHUTE LEVER



37720 - 37  
DRIVE PINION



37720 - 41  
FEEDER ARM



37720 - 43  
SWIVELLING  
LEVER



37720 - 45  
BEARING BUSH



37720 - 47  
MALTESE  
CROSS



37720 - 49  
INDEXING PLATE



37720 - 50 & 51  
BEARING SHELL  
WITH AXLE



37720 - 62  
TOOTHED  
SEGMENT



37720 - 63  
FEEDER ARM



37720 - 64  
FEEDER ARM



37720 - 70  
STRAP



37720 - 72  
STRAP



37720 - 107  
BEVEL GEAR



37720 - 108  
CAM DISK



37720 - 109  
CAM DISK



37720 - 120  
CAM DISK



37720 - 124  
CPL. SLIDE  
CURVE LEVER



37720 - 124  
SLIDE CURVE  
LEVER ONLY



37720 - 130  
EJECTOR



37720 - 131  
EJECTION PLATE

# Autoconer Model - AC-5 / X-5



37720 - 134  
HOUSING COVER



37720 - 135  
TENSION CLAW



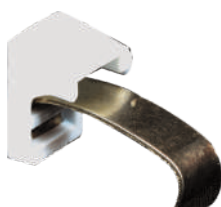
37720 - 136  
TENSION CLAW



37720 - 137  
CREEL ADAPTOR



37720 - 138  
CREEL ADAPTOR



37720 - 142  
CLAMP



37720 - 143  
COUPLING ROD



37720 - 144  
LIMIT STOP



37720 - 147  
SLIDE CURVE  
LEVER



37720 - 153  
OPENER ARM



37720 - 154  
SLIDE CURVE  
LEVER (NEW)



37720 - 160  
COUPLING ROD



37720 - 162  
SIDE PANEL



37720 - 171  
CENTERING  
DOORS BRACKET



37720 - 173  
TOP PART OF  
CENTERING - L. H.



37720 - 179  
TOP PART OF  
CENTERING - R. H.



37720 - 220  
PIPE HOLDER



37720 - 234  
TUBE ARBOT



37720 - 237  
ANTI LAP  
DEVICE



37720 - 239  
EJECTOR STOP



37720 - 247  
HOOD



37720 - 252  
CONNECTING  
STRAP



37756 - 13  
CYLINDER



37820 - 01  
HOUSING  
(SNARL BRAKE)



37820 - 05  
CONTROL LEVER



50191 - 03  
CHAIN LINK



52150 - 80  
RETAINER PLATE



78010 - 39  
MAGNET  
BRACKET



78010 - 49  
BOBBIN CARRIER  
(ALL SIZES)



78020 - 48  
BOBBIN CARRIER  
(FOOT)

# Autoconer Model - AC-6



11020 - 30  
BRUSH



21010 - 105  
SLEEVE



21010 - 601  
CYLINDER



22010 - 32  
SLEEVE



22010 - 38  
LOCKING



22010 - 40  
ANGULAR  
CONNECTION



22010 - 42  
GROMMET



25110 - 05  
REVERSING  
SWITCH



25110 - 23  
PULLEY



25120 - 23  
PULLEY



30020 - 01  
HOUSING &  
PUSH BUTTON



30020 - 50  
CPL. OPERATION  
UNIT



30030 - 01  
BLIND



30030 - 04  
SEALING CAP



30030 - 05  
CAP



30050 - 15  
TOOTHED  
SEGMENT



30060 - 05  
CRADLE SHOCK  
ABSORBER



30060 - 06  
MAGNETIC COIL  
WITH PLUNGER



30060 - 11  
COVER



30060 - 14  
JOINTED HEAD



30060 - 30  
PISTON



30080 - 06  
COMPENSATING  
LEVER



30100 - 02  
TOOTHED  
WHEEL FOR  
SUCTION ARM DRIVE



30310 - 03  
STATOR



30310 - 03  
STATOR PCB WITH  
CABLE AND  
CONNECTOR



30310 - 16  
DRUM SHAFT



30340 - 05  
PLUG WITH  
DRUM BUSH



32010 - 21  
VALVE BLOCK



32020 - 01  
SUCTION PIPE



32030 - 38  
SENSOR BRACKET



# Autoconer Model - AC-6



32030 - 39  
SEAL



32050 - 13  
YARN TRAP



33010 - 25  
GUIDE BUSHING



33010 - 37  
BRAKE BUSH



33010 - 38  
BRAKE LINING



33010 - 40  
BRAKE RING



33020 - 70  
HOLDING RING  
(5-57' CONE SIZE)



33020 - 91  
HOLDING RING  
(4-20' CONE)



33030 - 10  
COVER



33030 - 17  
HOLDING BUSH



33030 - 23  
ROUND  
CORD RING



33030 - 31  
HUB



33110 - 10  
TENSION DISC



33110 - 14  
TENSIONING  
SECTION CPL.



33110 - 21  
BLOWING  
NOZZLE



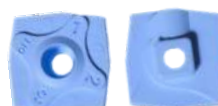
33110 - 74  
TENSION DISC



33110 - 122  
INTERMEDIATE  
PIECE



33130 - 41  
ACTUATING CAM



33230 - 25 & 27  
LIMIT STOP



33230 - 31  
WAX SHAFT



33230 - 36  
THRUST  
WASHER



33230 - 88  
BUSHING



33230 - 89  
HOSE



33410 - 37  
SENSOR BRACKET



33510 - 36  
LID LEVER



33510 - 82  
COVER



33510 - 321  
DISTRIBUTOR



33511 - 20  
SCISSORS  
STRAP



33511 - 21  
SCISSORS  
STRAP



33530 - 530  
HOSE

# Autoconer Model - AC-6



33530 - 540  
HOSE



33540 - 280  
COVER (13 & 16 MM)



33540 - 310  
RETAINER TUBE  
(SAW TOOTH)



33540 - 325  
SUPPORTING  
SHEET METAL



33540 - 460  
PRISM  
(ALL TYPES)



33540 - 541  
BRAKE PLATE



34010 - 02  
THREADING  
PLATE



34010 - 03  
GUIDE ARM



34010 - 09  
CYLINDER



34010 - 16  
SCISSORS  
ACTUATING LEVER



34010 - 17  
STATIONARY  
SHEAR BLADE  
(H. S. S.)



34010 - 19  
PIVOTING  
SHEAR BLADE  
(H. S. S.)



34010 - 22  
ACTUATING CAM



34010 - 32  
STRAP



34010 - 43  
TUBE ARBOT



34010 - 62  
LID BEARING



34010 - 67  
SWIVEL LID



34030 - 122  
BOBBIN PEG



34030 - 138  
EJECTOR



34030 - 146  
SLEEVE



34030 - 24  
BEARING BUSH



34030 - 25  
MALTESE CROSS



34310 - 03  
SUPPORTING  
ARM



34340 - 01  
HOUSING  
SNARL BRAKE



40010 - 35  
COVER



74030 - 16  
ANGULAR  
CONNECTING



74060 - 53  
FRICTION LAYER  
(BIG)



74060 - 54  
FRICTION LAYER  
(SMALL)



75010 - 49  
BOBBIN CARRIER  
FOOT



75010 - 52  
BOBBIN  
CARRIER  
(ALL SIZES)

# Autoconer (Electronics Spares)



16160 - 01 (148)  
INFORMATOR  
TOUCH SCREEN



16161 - 02 (147)  
INFORMATOR  
KEYPAD



16161 - 02 (147)  
INFORMATOR  
DISPLAY (FRONT)



16161 - 02 (147)  
INFORMATOR  
DISPLAY (BACK)



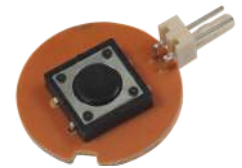
17550 - 162 (146)  
INFORMATOR  
KEYPAD



30105 - 01  
CPL. OPERATION  
SECTION



30105 - 901  
CPL. INDICATOR UNIT



30107 - 13  
CIRCUIT BOARD



30301 - 19  
SENSOR  
FOR DRUM SHAFT



31635 - 40  
S6 SENSOR



31635 - 41  
S7 & S8 COMBINED  
SENSOR



31635 - 41  
COVER FOR S7 &  
S8 SENSOR



32530 - 35  
SENSOR



33101 - 15  
SPLICER VALVE  
REPAIRING KIT



34101 - 35  
S4 SENSOR



34101 - 35  
S4 SENSOR (MODIFY)



34101 - 35  
S4 SENSOR  
(ROUND CABLE)



36201 - 41  
SENSOR - YARN TENSION  
(FX SERIES)



42035 - 10  
ELECTRO MAGNET (24V)



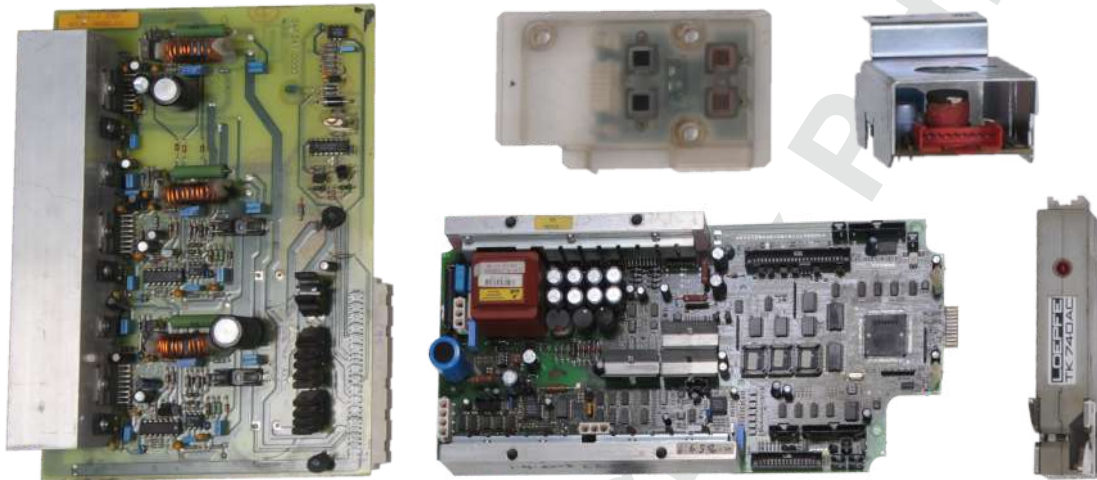
65230 - 70  
INITIATOR (ALL TYPES)



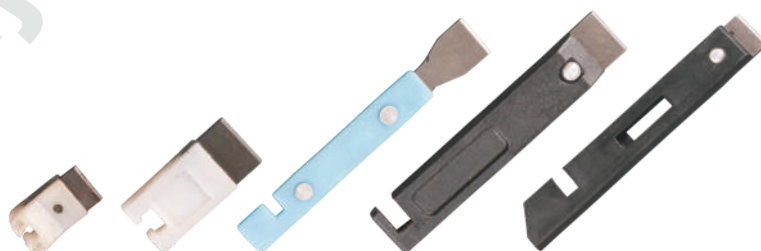
GZK WIRING  
FOR 238 (146)

**PLEASE INQUIRE FOR OTHER ELECTRONIC SPARES  
OTHER THAN ABOVE PHOTOGRAPHS,  
FOR WINDING MACHINES.**

# PCB Repairing & Cutting Knife



**WE CAN REPAIR ALL-MOST ALL ELECTRONIC SPARES & PCBs FOR WINDING MACHINES.**  
**PLEASE INQUIRE FOR FURTHER DETAILS.**



**ALL TYPES OF CUTTING KNIFE FOR E.Y.C.**

# Mach Coner Model 7-II & 7-V



003-41B-003  
SET PIECE



003-41B-009  
HANDLE STUD



003-41B-013  
BUSH (NEW)



003-41B-013  
CRADLE BUSH



003-41B-034  
LEVER



003-41B-034  
LEVER  
(MODIFIED)



003-41B-035  
INCREASE  
ROD BOLT



003-42A-011  
NEEDLE BEARING



003-42A-015  
BRAKE HOLDER



003-42A-019  
BUNCH GUIDE  
(NEW DESIGN)



003-42A-019  
BUNCH GUIDE  
(OLD DESIGN)



003-42A-023  
BEARING  
CENTER



003-42A-032  
CPL. BEARING  
CENTER WITH CAP



003-42A-032  
BEARING CENTER  
COMPLETE



003-42A-038  
BRAKE SHOE



003-42J-016  
BUSH



003-422-001  
SLEEVE



003-471-013X  
CAP



003-471-020  
OIL DAMPER



003-601C-001  
BUSH



003-601C-003  
YARN TRAP



003-601C-004  
YARN TRAP HOLDER



003-602-002X  
LEVER



003-602-004  
TENSOR BASE



003-604-008  
SHAFT (WAXING)



003-604-009  
LIFTING PLATE



008-170A-002  
STOPPER



008-220-008  
ROLLER



008-300-009  
CASE COVER



008-300-052  
LAMP & HOLDER CPL.

# Mach Coner Model 7-II & 7-V



008-310-001  
SHAFT  
(FRICTION CLUTCH)



008-310-004  
BUSH



008-310-011  
SET BRACKET  
(R. H.)



008-310-013  
SET BRACKET  
(L. H.)



008-310-018  
LEVER



008-310-022  
PLATE



008-310-024  
SHAFT



008-330-001  
DRUM STAY SHAFT



008-330-007  
DRUM BELT  
(ROUND)



008-330-025X  
BRAKE LEVER



008-330-028X  
BRAKE SHOE (OLD)



008-330-028X  
BRAKE SHOE (NEW)



008-330-033X  
SHAFT (DRUM)



008-330-036  
DRUM COVER



008-330-037  
PROTECTOR



008-330-040  
BRUSH (DRUM)



008-331-006X  
DRUM PULLEY COMPLETE



008-350-007X  
DUCT (SUCTION)



008-350-010  
COMB



008-350-022  
TAPE



008-360-002  
HOLDER (CLAMP)



008-360-002X  
CPL. CLAMP  
HOLDER



008-360-008  
COVER (CLAMP)



008-360-027  
CAM  
(RETIE PIPE OPENER)



008-360-034  
YARN GUIDE



008-360-044  
CAP



008-370-003  
COVER



008-370-005  
SHUTTER CUTTER



008-370-006  
CUTTER



008-370-011  
CUTTER LEVER

# Mach Coner Model 7-II & 7-V



008-370-012  
CAP



008-370-016X  
SHUTTER CASE



008-380-001  
RETIE CAM  
LEVER SHAFT



008-380-003X  
GEAR  
(RETIE PIPE SEGMENT)



008-380-013X  
LEVER - A3  
(MEMORY CAM)



008-380-020  
CAM



008-380-021  
REVERSING  
ROLL CAM



008-380-024  
MEMORY CAM



008-380-026  
DRUM START CAM



008-380-032  
BRAKE CAM



008-380-038X  
GEAR (MOUTH SEGMENT)



008-380-040  
BUSH



008-380-043X  
LEVER  
(SHUTTER CUTTER CAM)



008-380-059  
ROLLER



008-390-003  
MO-GEAR  
(DRIVE)



008-390-004X  
CLUTCH (CAM)



008-410-058  
BUNCH GUIDE



008-41A-030  
LEVER



008-41A-030  
LEVER (MODIFIED)



008-45B-017  
CAM (S1)



008-45B-022  
CAM S2



008-45B-047  
CAM (S8)



008-45B-059  
BUSH



008-45B-062  
GUIDE  
FOR S10 LEVER



008-45B-062X  
LEVER S10  
WITH GUIDE



008-45B-063  
SCREW  
(AIR ADJUSTING)



008-45B-064  
SHAFT  
(CAM LEVER)



008-45B-065  
SPRING  
(CAM LEVER) S9



008-45B-067  
S10 CAM  
(SPLICING BLAST)



008-45B-081  
HOSE ADAPTOR

# Mach Coner Model 7-II & 7-V



008-480-006  
NOZZLE PIPE  
(ALL SIZES)



008-480-012  
LEVER



008-480-013  
LEVER  
(ALL TYPES)



008-480-022  
CPL. LEVER  
(STOPPER)



008-480-026X  
LEVER - INTERMEDIATE



008-480-045  
CLAMP SPACER



008-480-062  
AIR GUIDE



008-480-081  
CUTTER (FIXED)



008-480-082  
CUTTER (MOVABLE)



008-480-087  
SPRING (CUTTER)



008-480-089  
PLATE (FRONT)



008-480-097  
YARN GUIDE  
FOR NOZZLE SPLICING



008-50A-002X  
HEAD PUSHING



008-50A-008  
CAN (MAGAZINE)  
# 06 POCKETS



008-50A-008A  
RATCHET WHEEL



008-50A-010  
BASE MAGAZINE



008-50A-028X  
BRACKET (MAGAZINE)



008-50A-030  
COVER



008-50A-032X  
PIPE  
(MAGAZINE SUCTION)



008-50B-022  
LEVER  
(MAGAZINE DRIVE)



008-501-006  
JOINT (HOSE)



008-502-001  
ROD  
(CONNECTING)



008-502-002  
ROD (CONNECTING)



008-502-006X  
HOUSING GEAR



008-502-013X  
GEAR SEGMENT



008-52A-004  
BUSHING



008-52A-015  
TRAP DOOR (LH)



008-52A-018  
TRAP DOOR (RH)



008-530-013X  
EJECTOR (BOBBIN)



008-552-002  
PULL BUTTON  
WITH SIGNAL PIECE



# Mach Coner Model 7-II & 7-V



008-552-004  
CPL. PULL BUTTON  
HOLDER



008-553-004  
WHEEL (MEMORY  
RATCHET)



008-553-006  
PIN  
(MEMORY RATCH)



008-553-016  
RATCHET WHEEL  
RETURN SPRING



008-553-047 & 048  
CPL. ARM FEELER



008-553-062  
DRUM SENSOR  
BRACKET



008-570-005  
DRIVE GEAR (KO)



008-570-006X  
CLUTCH (CAM)



008-570-013  
REVERSING ROLL



008-570-014  
CAM SHAFT



008-570A-006  
CLUTCH (CAM)



008-580B-031  
GUIDE



008-601-006  
PACKING  
(YARN TRAP)



008-601B-006  
YARN TRAP BUSH



008-601B-008  
YARN TRAP  
SHUTTER



008-601B-034  
BLAST NOZZLE



008-602-007X  
MOTOR (TENSER)



008-602-016  
TENSER DISK



008-602-017  
TENSER DISK  
(NEW DESIGN)



008-602-017  
TENSER DISK  
(OLD DESIGN)



008-603-007  
CUTTER(MOVABLE)



008-603-008  
CUTTER (FIXED)



008-603A-037  
YARN GUIDE  
(TENSER)



008-604-004X  
LEVER  
(WAX PUSH)



008-604-008  
WAXING SHAFT



008-604-026  
YARN GUIDE



008-604-029  
BRACKET  
(WAXING)



008-604-044  
GEAR (SPUR)



008-604-045  
YARN GUIDE



008-E30-018  
SENSOR

# Mach Coner Model 21-C



21A-200-034  
BRUSH



21A-300-008  
COVER



21A-310-017  
PANEL



21A-350-001  
DRUM ASSLY.



21A-360-009  
PLATE



21A-370-013  
MOUTH COMPLETE



21A-370-013A  
MOUTH (ELBOW)



21A-370-018  
COMB



21A-370-019  
PAD



21A-377-001  
BLOCK



21A-377-004  
STOPPER



21A-380-009  
CPL. HOLDER



21A-380-011  
DISK



21A-380-014  
COVER



21A-380-015  
SPRING



21A-380-020  
CAM (OPENER)



21A-390-004  
GEAR (DO)  
ASSEMBLY



21A-390-010  
SHAFT



21A-390-013  
GEAR (AO)  
ASSEMBLY



21A-390-016  
GEAR (SEGMENT)  
ASSEMBLY



21A-390-019  
CYLINDER



21A-390-020  
PISTON



21A-390-040  
PLATE



21A-410-013 & 014  
HANDLE WITH KNOB



21A-410-013  
HANDLE



21A-410-014  
KNOB



21A-410-016  
BUSH



21A-410-017  
HANDLE STUD



21A-410-018  
SPACER



21A-410-026  
SET PIECE

# Mach Coner Model 21-C



21A-410-029  
STOPPER



21A-410-030  
BRUSH



21A-410-036  
WASHER



21A-410-037  
RING



21A-410-040  
COVER



21A-411-005  
BUSH



21A-420-001  
SLEEVE



21A-422-001  
BEARING  
CENTER CPL.



21A-422-003  
BUSH



21A-422-008  
BEARING CENTER



21A-422-009  
BRAKE SHOE  
(06 & 08 M.M.)



21A-422-010  
HOLDER



21A-422-012  
SEAL (DUST)



21A-422-014  
WASHER



21A-422-015  
SPRING



21A-422-016  
BUSH



21A-422-017  
HOLDER BEARING



21A-422-019  
PACKING



21A-422-020  
SPACER



21A-422-021  
HOLDER



21A-422-100  
CPL. BEARING  
CENTER



21A-422-101  
CPL. HOLDER BEARING



21A-426-001  
BEARING CENTER  
(NEW DESIGN)



21A-426-001  
BEARING  
CENTER



21A-426-002  
HOUSING  
(BEARING)



21A-426-003  
SHAFT



21A-426-006  
MAGNET



21A-426-100  
CPL. BEARING  
CENTER (L.H.)



21A-440-003  
PACKING



21A-440-004  
SHAFT

# Mach Coner Model 21-C



21A-440-006  
CYLINDER



21A-440-021  
BOLT



21A-440-024  
JOINT (ELBOW)



21A-440-025  
JOINT (ELBOW)



21A-460-004  
HOLDER (SWITCH)



21A-460-007  
COVER (NUT)



21A-460-010  
UNIT SWITCH  
COMPLETE



21A-470-002  
FRAME (L)



21A-470-003  
SHAFT



21A-470-006  
COLLAR



21A-470-029  
COVER



21A-480-008  
LEVER ASSEMBLY



21A-480-010  
LEVER



21A-480-012  
LEVER ASSEMBLY



21A-480-021  
HOLDER (SPRING)



21A-480-028  
STUD (CUTTER)



21A-480-031  
SPRING (PLATE)



21A-480-032  
LEVER (CUTTER)



21A-480-041  
LEVER ASSEMBLY



21A-480-043  
LEVER



21A-480-046  
YARN HOLDING  
LEVER (ALL TYPE)



21A-480-050  
TWISTING NOZZLE  
(G1/G2Z/G8Z/  
GS & G3S)



21A-520A-031  
GUIDE - CERAMIC



21A-520B-028  
GUIDE



21A-520B-032  
HOLDER



21A-520B-033  
HOLDER



21A-520B-036  
SPRING



21A-520B-039  
SPRING



21A-540-003  
GUIDE - CERAMIC



21A-540-004  
GUIDE - CERAMIC

# Mach Coner Model 21-C



21A-540-005  
LEVER



21A-540-006  
SLIDER



21A-540-007  
SPRING



21A-540-015  
LEVER



21A-540-016  
LEVER



21A-540-017  
GUIDE - CERAMIC



21A-540-018  
LEVER



21A - 540 - 027  
HOLDER



21A-540-029  
GUIDE - CERAMIC



21A-540-030  
GUIDE - CERAMIC



21A-560-007  
PLATE



21A-560-010  
JOINT



21A-560-013  
GUIDE - CERAMIC



21A-560-057  
SHAFT ASSEMBLY



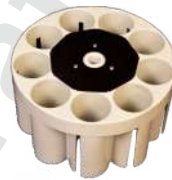
21A-603B-007  
LEVER



21A-603B-027  
COLLAR



21A-603B-028  
LEVER



21A-608H-008  
MAGAZINE CAN  
(09 POCKETS)



21A-608H-010  
BASE ASSEMBLY



21A-608H-16,17,18  
LEVER TRIP WITH  
ROLLER & PIN



21A-608H-028  
MAGAZINE  
BRACKET



21A-608H-047  
PIPE



21A-608H-048  
BUSH



21A-608H-051  
JOINT



21A-614A-005  
SPRING (PLATE)



21A-614A-006  
LEVER



21A-617B-003  
STOPPER RUBBER



21A-617B-004  
STOPPER RUBBER



21A-617B-007  
GEAR



21A-620B-002  
GEAR

# Mach Coner Model 21-C



21A-620B-025  
SPRING



21A-627-044  
WIRE



21A-875-020  
BRUSH HOLDER



21A-875A-021  
SPRING



21A-875A-022  
BRUSH



21A-878B-006  
SHOVEL



21A-880A-011  
PULLEY



21A-882A-023  
GUIDE



21A-882A-024  
GUIDE



21A-882A-044  
SPACER



21A-882A-045  
SHAFT



21A-992-005  
HANDLE ASSEMBLY



21A-E01-024  
PACKAGE SENSOR  
ASSEMBLY



21D-150A-031  
STOPPER



21D-250-023  
JOINT



21D-400-019  
HOSE



21D-401-001  
BRACKET



21D-401-004  
SHAFT



21D-401-005  
CLAMP



21D-401-006  
CUTTER



21D-401-007  
SPRING



21D-401-009  
LEVER



21D-401-012  
BRACKET



21D-401-016  
JOINT



21D-450-035  
LEVER



21D-450-036  
LEVER



21D-450-037  
LEVER



21D-450-038  
LEVER



21D-450-039  
LEVER



21D-450-040  
LEVER

# QPRO PROCESS CONER



9C1-101-001  
SOLENOID VALVE



9C1-120-001  
DRUM ASSY



9C1-120-003  
WHEEL



9C1-150-001  
BEARING CENTER  
(ALL SIZE)



9C1-150-002  
BRAKE SHOE



9C1-150-003  
HOLDER



9C1-150-006  
HOLDER



9C1-150-009  
BEARING



9C1-150-010  
BEARING



9C1-150-100  
BEARING CENTER



9C1-160-001  
BEARING  
CENTER  
(ALL SIZE)



9C1-160-100  
BEARING  
CENTER



9C1-169-016  
BRUSH



9C1-170-001  
CRADLE



9C1-170-002  
BRACKET



9C1-170-008  
STUD



9C1-170-012  
BRUSH



9C1-170-901  
HANDLE ASSY



9C1-190-001  
CYLINDER



9C1-190-002  
PISTON



9C1-190-006  
CYLINDER



9C1-190-019  
BUSH



9C1-190-023  
SOLENOID VALVE



9C1-190-100  
CYLINDER  
COMPLETE



9C1-250-003  
PLATE



9C1-250-019  
SHAFT



9C1-280-017  
MOUTH



9C1-280-018  
MOUTH



9C1-290-007  
BOSS



9C1-300-003  
HOLDER

# QPRO PROCESS CONER



9C1-300-007  
COVER



9C1-300-013  
CAM



9C1-320-013  
SHAFT



9C1-320-038  
JOINT (S2)



9C1-320-073  
PIPE



9C1-320-201  
CUTTER ASSY  
(CERAMIC)



9C1-320-203  
NOZZLE ASSY



9C1-320-904  
LEVER ASSY



9C1-320-906  
LEVER ASSY



9C1-410-903  
DAMPER ASSY



9C1-410-904  
LEVER ASSEMBLY



9C1-410-906  
LINK ASSY



9C1-485-019  
BRACKET



9C1-485-020  
HOLDER



9C1-500-014  
CYLINDER



9C1-500-017  
PISTON



9C1-505-009  
LEVER ASSY



9C1-506-011  
PISTON



9C1-510-005  
HANDLE



9C1-510-015  
SCREW



9C1-510-034  
NUT  
(OLD DESIGN)



9C1-510B-053/054  
NUT ASSEMBLY  
(NEW DESIGN)



9C1-515-004  
COVER



9C1-515-005  
COVER



9C1-515-006  
COVER



9C1-515-901  
HOLDER ASSY



9C1-516-022  
NOZZLE



9C1-540-004  
STOPPER



9C1-540-010  
BRUSH



9C1-540-013  
STOPPER



# QPRO PROCESS CONER



9C1-560-008  
BELT



9C1-560-040  
SPRING



9C1-580-030  
CLUTCH



9C1-610-903  
RATCH  
ASSEMBLY



9C1-610-904  
RATCH  
ASSEMBLY



9C1-E01-001  
DRUM MOTOR  
FRONT SHAFT



9C1-E01-001  
DRUM MOTOR  
BACK COVER



9C1-E01-032  
CABLE



9C1-E01-201  
SENSOR



9C1-E01-212  
SENSOR



9C1-E01-251  
SENSOR



9CA-160-001  
TRAY  
(ALL SIZE)



9CA-250-009  
FILTER



9CA-450-021  
ROLLER



9CA-520A-022  
BEARING UNIT



9CA-525A-005  
CYLINDER



9CA-525B-005  
AIR CYLINDER



9CA-650-002  
BELT



9CA-690-006  
CASTER



9CD-120-010  
SUPPORT



9CD-120-015  
GUIDE



9CD-300-016  
AIR CYLINDER



9CD-400-001  
CYLINDER



9CD-400-005  
BRACKET



9CD-400-015  
HOSE



9CD-400-021  
BAND



9CD-401-009  
STOPPER



9CD-410-004  
SHAFT ASSY



9CD-410-012  
BRACKET



9CD-410-013  
BRACKET

# QPRO PROCESS CONER



9CD-450-010  
LEVER  
ASSEMBLY



9CD-500-004  
LEVER  
ASSEMBLY



9CD-600-003  
STOPPER



9CF-150-027  
HOLDER



9CF-150-061  
BRACKET



9CF-153-060  
BRACKET



9CF-153-061  
BRACKET



9CF-252A-901  
AIR CYLINDER



9CF-252B-001  
LEVER ASSEMBLY



9CF-253A-004  
LEVER



9CF-270-001  
BRACKET



9CF-271-012  
BRUSH



9CF-410-003  
LEVER



9CF-410-004  
BRACKET



9CF-410-006  
BRACKET



9CF-410-014  
HOLDER



9CF-410-020  
BALL SPINE



9CF-410-028  
AIR CYLINDER



9CF-410-032  
NOZZLE



9CF-410-033  
JOINT



9CF-420-001  
AIR CYLINDER



9CF-430-013 & 014  
CUTTER



9CF-431-015  
VALVE



9CF-432-005  
SHEET



9CF-432-006  
LEVER



9CF-432-021  
ROLLER



9CF-433-003  
GUIDE



9CF-433-004  
PLATE



9CF-450-901 004 005  
ROLLER ASSEMBLY  
HUB ROLLER



9CF-500-041  
BRUSH

# COMPANY PHILOSOPHY

**“A customer is the most important visitor on our premises. He is not dependent on us. We are dependent on him. He is not an interruption in our work. He is the purpose of it. He is not an outsider in our business. He is part of it. We are not doing him a favour by serving him. He is doing us a favour by giving us an opportunity to do so”.**

**- By Mr. M. K. Gandhi (The Father of Nation)**

## **MADE IN INDIA GLOBAL RECOGNISATION.....**

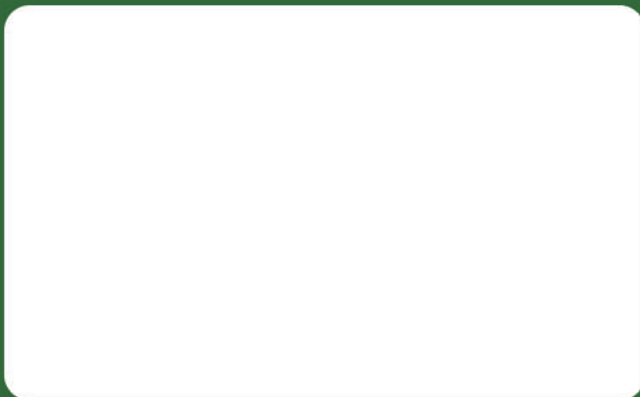


### **“WE BELIEVE”**

**Service is the lifeline of our organization, Everything flows from it, and is nourished by it. Customer service is not a Department, it is an Attitude.**



## Represented By



## Contact Us:

**SHRIJI SPAREKRAFT IMPEX PVT. LTD.**

3, GROUND FLOOR,  
DUN SHOPPING CENTRE,  
OPP. GAMADIA COLONY,  
225-227, J. D. ROAD, TARDEO,  
MUMBAI - 400 007, INDIA.

PHONE : (+91 22) 2381 4034  
(+91 22) 2382 4034

CELL : +91-98690 86568  
+91-98207 86568

EMAIL : SPARES@SHRIJISPAREKRAFT.COM  
SANKET@SHRIJISPAREKRAFT.COM

WEB : WWW.SHRIJISPAREKRAFT.COM

### © Copyright Rights

We own all copyright rights in the text, images, photographs, graphics, user interface, and other content provided on this catalogue, and the selection, coordination, and arrangement of such content, to the full extent provided under the copyright laws of the India and other countries. Except as expressly provided in written permission, anyone are prohibited implied from copying, reproducing, modifying, distributing, displaying, performing or transmitting any of the contents of this our product catalogue for any purposes, and nothing otherwise stated or in the Services confers on you any license or right to do so.

Any other use, including for any commercial, personal purposes, is strictly prohibited without our express prior written consent.